



Bathtub - CL.1

WATER SHEET Cascade spout for wall-mounted installation - polished chrome

Article number: 13 415 979-00



- 5-7/8" Projection
- Cascade
- Cover plate 9-1/2" x 2-3/8"
- 1/2" connection
- Plug-in connection mounting
- Water flow rate limited to max. 7 gpm

**Codes & Standards**

- ASME A112.18.1/CSA B125.1
  
- Fittings group in compliance with DIN 4109: 2



polished chrome

Accessory is required for this item.

Discontinued items available to order until 31.12.9999

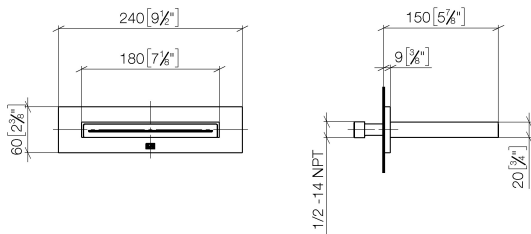
Bathtub - CL.1

WATER SHEET Cascade spout for wall-mounted installation - polished chrome

Article number: 13 415 979-00

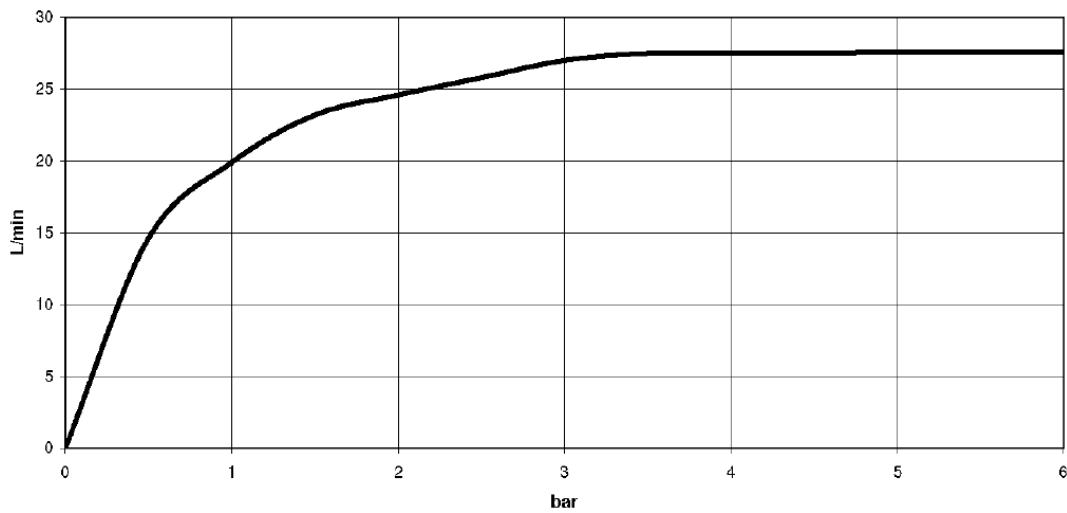
Dimensional drawing

mm [inches]



All dimensions in mm / inch = mm x 0,0394

Flow rate chart



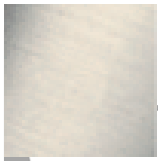


Bathtub - CL.1

WATER SHEET Cascade spout for wall-mounted installation - polished chrome

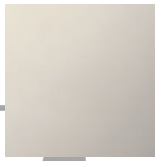
Article number: 13 415 979-00

## Object surface finish diagram



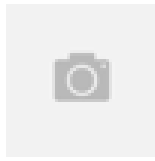
platinum matte

13 415 979-06



platinum

13 415 979-08



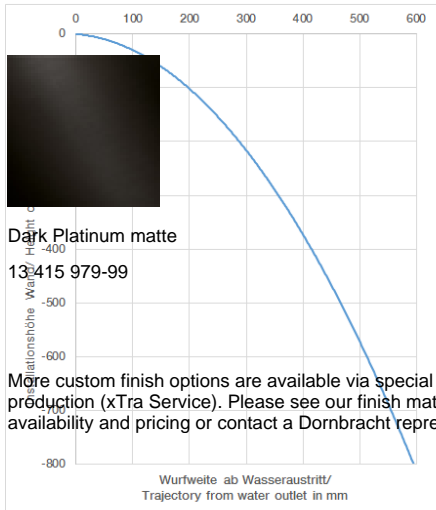
Brushed Durabronz

13 415 979-28



black matte

13 415 979-33



35 080 970-90 0010

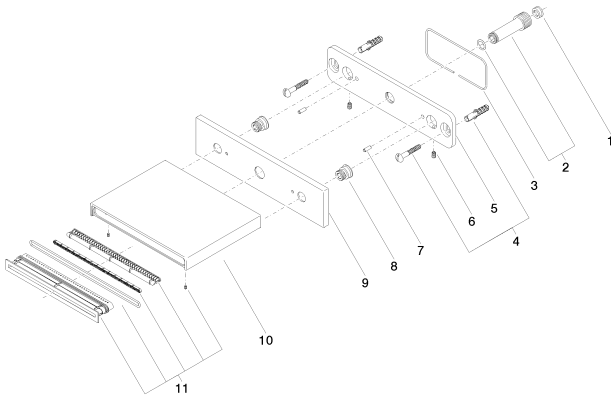
Rough-in adapter -

Bathtub - CL.1

WATER SHEET Cascade spout for wall-mounted installation - polished chrome

Article number: 13 415 979-00

### Spare parts list



Number	Item Number	Designation	Number of units
1	09 23 01 057 90	flow reducer	1
2	90 24 03 213 00 90	connection	1
3	09 14 03 134 90	seal	1
4	04 30 31 024 01 90	fixing set	1
5	09 17 97 059 90	holder	1
6	09 31 11 036 90	pin	2
7	09 31 11 040 90	pin	2
8	09 24 03 214 90	nipple	2
9	09 27 78 031-00	rosette	1
10	09 11 78 003 20-00	spout	1
11	90 29 03 059 00 90	insert	1